

## GLOBAL IMPACT 2015

FEB. 22—MARCH 1

# The Joy of Access

### Missions Theme

This year's theme celebrates the overwhelming joy we share in having access to the gospel of Jesus Christ. From the overflow of that joy comes our passion to carry His message of grace, hope, mercy, and love to parts of our country and areas of our world with little or no gospel access.

### Alliance Missions

The Alliance has a strong missions emphasis. We believe that in order to carry out Jesus' command to "make disciples of all nations," we must send workers to people who have never heard the gospel. Currently, there are over 700 workers sharing the gospel in 70 countries around the world.

Presently, there are more than 500,000 people worshipping in more than 2,000 Alliance churches in the United States.

There are an estimated 6,000,000 people worshipping in more than 20,000 Alliance churches worldwide.

### Missions Giving

A Great Commission Fund (GCF) was established by The Alliance to provide the money necessary to send workers. When you give to "missions" your contribution goes entirely to the GCF. Thank you for your generous support of The Alliance as they endeavor to bring the good news of Jesus to all people—everywhere!

### Our Guest Workers

JOEL & NANCY MARTINEZ

*Serving in* **SPAIN**

CHILDREN: Sonya, David, Jonathan, Mark



### SPAIN

Behind the facade of Spain's imposing cathedrals and vibrant culture lurks a dark spiritual void—less than 1 percent of its population is evangelical. In response to the need, our first C&MA workers entered Spain in 1978, beginning in Barcelona. For many years, the work was difficult and response minimal. As late as 1999, our ministry in Spain consisted of just three small churches.

In 2000, the tide turned remarkably, and quite suddenly, with the arrival of thousands of Latin American immigrants. God began opening new doors to share the gospel and plant churches among these new residents. Despite crippling financial hardships and unemployment in the country today, our Spanish and immigrant congregations in Spain have experienced growth.

Today, the Evangelical Christian and Missionary Alliance of Spain consists of 7 organized churches, 7 unorganized groups, and 1,530 inclusive members.

# CREATING ACCESS

## TO THE GOSPEL

**ALL**  
WHO CALL  
UPON THE  
LORD WILL  
BE SAVED.

*Romans 10:13*

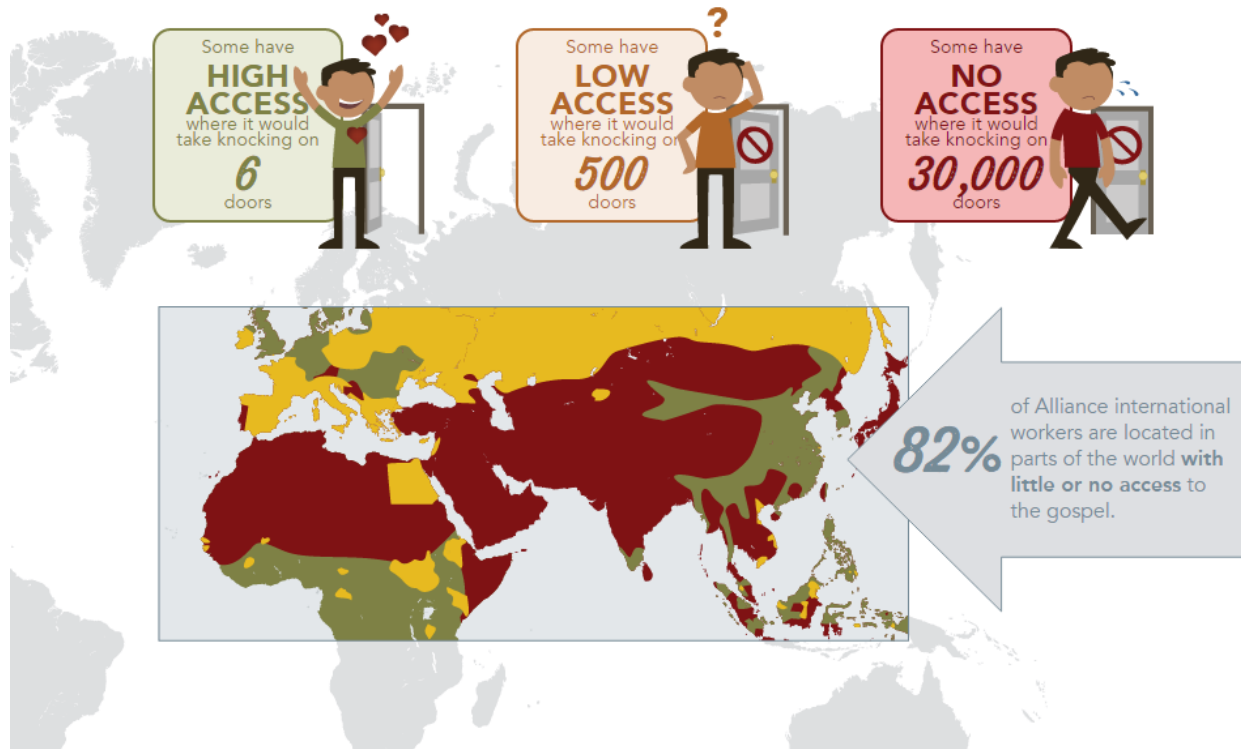


But how can they  
call on a Lord  
they've **NEVER**  
**HEARD OF?**

### How many doors

does a person have to knock on  
before finding someone who can  
tell them about Jesus?

Not everyone has equal access to the gospel.



### TOGETHER

we are creating  
access around the  
world so that all will  
have an opportunity  
to hear the good  
news of the gospel!



MORE THAN  
**700**  
INTERNATIONAL  
WORKERS

SERVING IN  
**70**  
COUNTRIES  
AROUND THE  
GLOBE

# Ministry Opportunities

at Balboa

## Prayer and Brunch • Feb. 7 • 8:30 am

Our church needs intense prayer for God's wisdom and leading in the new year. Meet in the Fellowship Hall at 8:30 am on Saturday morning (2/7) to spend an hour in prayer for our church ministries and our church people. Following this prayer time, everyone is invited to go out for brunch. For further information, contact Abe Racela (760.522.8617).

## Connect Group: Game Night • Feb. 13

Bring your favorite game, a friend and a snack to share. Meet in the Fellowship Hall at 6:30 pm for friendly competition. Childcare is provided. Contact Danielle Dail-Orcutt (760.290.3470) for more information.

## Seniors' Potluck • Feb. 20

Meet in the Fellowship Hall at 1:00 pm with a dish to share, a friend, and cards for those with February birthdays and anniversaries.

## Global Impact • Feb. 22 to March 1

Joel and Nancy Martinez will be coming to us from Spain to share about their work there. There will be several opportunities throughout this week to learn what God has been doing in Spain.

## Under Construction

The two toddlers rooms are currently under construction. All the toddler functions will take place in Room 9 on the first floor by the drinking fountain.

## Awana • Wednesdays • 6:30 to 8:15 pm

February schedule for Sparks and T & T:

- 2/4 **Regular Night** - Wear your uniform
- 2/11 **thgiN wdrawkcaB** - Wear clothes backwards
- 2/18 **Store Night** - Spend your Awana bucks
- 2/25 **Global Impact Night** - Meet a real missionary

## LIFE Groups • Weekly

LIFE Groups meet each week to study God's Word together. Experience authentic relationships as you dig deeper into God's Word. It's never too late to join a group.

<b>SUNDAY</b>	6:00 pm	Edwards <i>STUDYING: Heaven</i>
<b>TUESDAY</b>	7:00 pm	<i>STUDYING: Genesis</i>
<b>WEDNESDAY</b>	6:30 pm	Bloom (women)
<b>SATURDAY</b>	5:00 pm	Refuge (young adults) <i>STUDYING: Unlocking Mysteries of Genesis</i>

## Children's Church • Sundays

- **TODDLER CHURCH** is offered for all preschoolers during the Sunday worship service. **Temporary location:** Meet in Room 9 on the first floor underneath the middle staircase next to the drinking fountain.
- **CHILDREN'S CHURCH** is for kids, K-Grade 6. They are dismissed during the worship service.

## General Council 2015 • May 26-31 • LONG BEACH

Save these dates! It's the worldwide gathering of The Alliance in Long Beach. Pastors, missionaries and lay people all gathered together to learn, be inspired and encouraged. Find information at: [cmalliance.org/council](http://cmalliance.org/council). Some of the featured speakers will be C&MA president, John Stumbo, Francis Chan, Joni Eareckson Tada, and Leith Anderson.

## Carole Ellis' Ministry

Balboa Community Church has committed to support Carole's ministry with Wycliffe Associates in Cameroon, West Africa. If you wish to donate, please mark "Carole Ellis" on your checks or envelopes. Remember to uphold Carole in prayer. We still miss her!

## Sunday School • Begins at 9:00 am

Make the decision to come to Sunday School. The adults meet in the Fellowship Hall and the children and youth meet in the first room upstairs on the left.

## Alliance Prayer Requests • Weekly

Weekly prayer requests from our missionaries can always be found on the table in the lobby or at the Welcome Center. Our missionaries depend on our prayers.

## Financial Update

General Fund - Dec. 2014	
Dec. 1 (Begin balance)	\$51,938.06
Income	\$11,074.50
Expenses	(\$11,197.52)
Dec. 31 (End balance)	\$51,815.04

Monthly budget goal = \$12,003

Designated Fund Balances - Dec. 31	
Benevolent	\$1,981.15
Building Fund	\$11,440.99
Missions (GCF)	\$1,220.00
Youth Scholarship	\$ 575.00